

# New Zealand Certificate in Heavy Automotive Engineering

Level 3 and 4



mito

---

If you're interested in repairing and servicing heavy plant and equipment, heavy road transport vehicles, agricultural equipment or forklifts and other fuel or electric-powered machinery, this training programme is for you.

---

### Programme outline

This work-based programme is expected to take four years to complete both Level 3 and 4.

The training programme includes a mix of practical training and assessment, undertaken in the workplace, and eLearning, allowing you to complete theory elements of the programme at your own pace. You will have access to videos, interactive simulations and theory assessments, which can be easily accessed at any time and from any device – mobile phone, tablet or PC.

QUALIFICATION OUTCOMES	LEVEL	CREDITS
<b>OUTCOME 1</b> Follow workplace policies, procedures and relevant regulations to work safely and effectively in an automotive workshop.	3	10
<b>OUTCOME 2</b> Use tools and equipment to complete basic workshop engineering tasks.	3	15
<b>OUTCOME 3</b> Apply fundamental automotive engineering knowledge to service engine, and driveline systems.	3	30
<b>OUTCOME 4</b> Check operation of, and perform minor repairs on, electrical and electronic systems.	3	40
<b>OUTCOME 5</b> Apply fundamental automotive engineering knowledge to service engine, and driveline systems.	3	25

Choose one of the four specialised pathways upon completion of the Level 3 requirements, for a programme tailored to your specific interests.

### Road transport

You'll be working on heavy road transport vehicles, including trucks, buses, heavy trailers and combination units.

QUALIFICATION OUTCOMES		LEVEL	CREDITS
<b>OUTCOME 6</b>	Monitor the workplace and respond to issues as required to maintain a safe and effective workplace.	4	15
<b>OUTCOME 7</b>	Apply the appropriate precautionary measures when servicing and repairing high risk heavy automotive systems.	4	50
<b>OUTCOME 8</b>	Service and repair trucks, buses, heavy trailers and combination units.	4	175

### Agricultural equipment

You'll be working on land maintenance, cultivation and harvesting equipment – that's everything from mowers to combine harvesters!

QUALIFICATION OUTCOMES		LEVEL	CREDITS
<b>OUTCOME 6</b>	Monitor the workplace and respond to issues as required to maintain a safe and effective workplace.	4	15
<b>OUTCOME 7</b>	Apply the appropriate precautionary measures when servicing and repairing high risk heavy automotive systems.	4	50
<b>OUTCOME 8</b>	Service and repair tractors, land maintenance and cultivation implements, and harvesting equipment.	4	175

## Plant and equipment

You'll be working on heavy plant and equipment, including construction, off-road and earth-moving machinery.

QUALIFICATION OUTCOMES		LEVEL	CREDITS
<b>OUTCOME 6</b>	Monitor the workplace and respond to issues as required to maintain a safe and effective workplace.	4	15
<b>OUTCOME 7</b>	Apply the appropriate precautionary measures when servicing and repairing high risk heavy automotive systems.	4	50
<b>OUTCOME 8</b>	Service and repair construction, off-road, and earth moving equipment.	4	175

## Materials handling equipment

You'll be working on equipment used for moving and storing materials, goods and products. This includes electric and non-electric forklifts and other fuel or electric powered machinery.

QUALIFICATION OUTCOMES		LEVEL	CREDITS
<b>OUTCOME 6</b>	Monitor the workplace and respond to issues as required to maintain a safe and effective workplace.	4	15
<b>OUTCOME 7</b>	Apply the appropriate precautionary measures when servicing and repairing high risk heavy automotive systems.	4	50
<b>OUTCOME 8</b>	Service and repair all electric and non-electric forklifts and other fuel or electric powered equipment designed for the movement of goods.	4	175



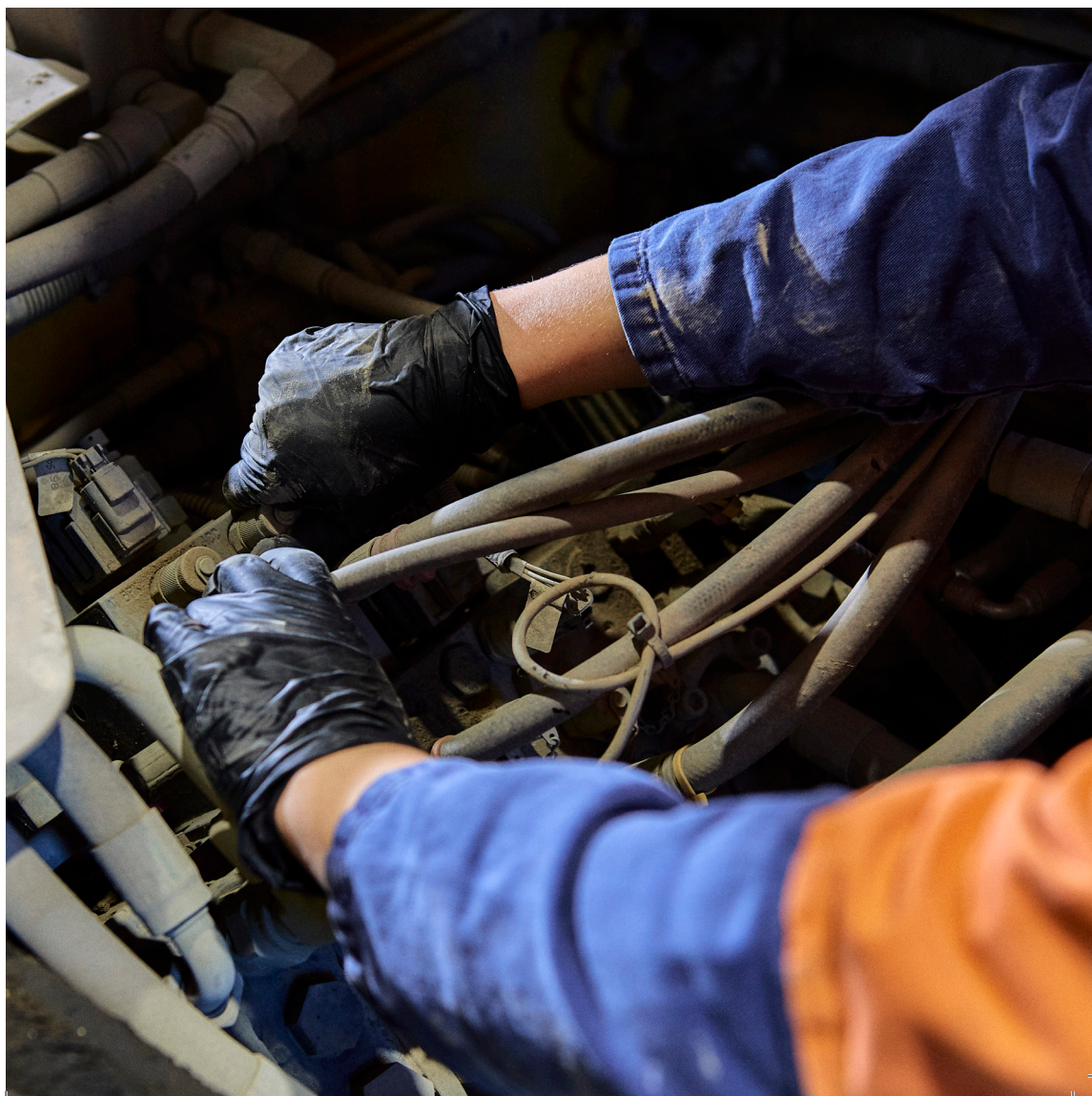
## Entry requirements

You must be employed full-time in the industry to enrol in this programme.

## Programme fee

\$1,154 (excluding GST and any bulk learner discount).

Some learners may be eligible for the Government's Fees Free scheme (up to two year's free fees) – check your eligibility at [feesfree.govt.nz](https://feesfree.govt.nz).



**NEW ZEALAND CERTIFICATE IN  
HEAVY AUTOMOTIVE ENGINEERING  
(LEVEL 3 AND 4)**

Enrol at [mito.nz/heavyauto](https://mito.nz/heavyauto)

---

MITO is a business division of  
Te Pūkenga – New Zealand Institute  
of Skills and Technology.

We support on-job learning and  
career development for the  
automotive, transport, logistics  
and extractive industries.

0800 88 21 21 | [info@mito.org.nz](mailto:info@mito.org.nz) | [mito.nz](https://mito.nz)